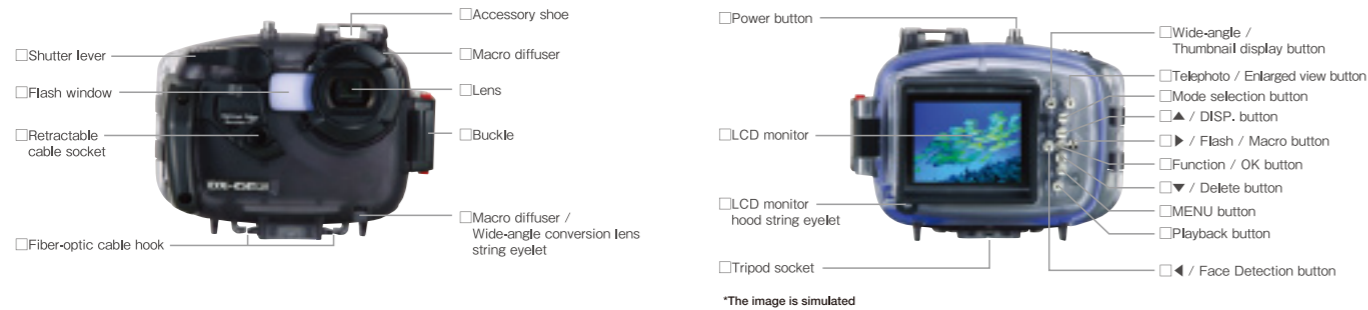


Details of the DX-GE5 housing



Major specifications for the G5WP-SS camera

Image sensor	Effective 12.2 megapixels, 1/2.3-inch CCD
Lens	Focal length: f=6.7 to 27mm (35mm film equivalent focal length 38 to 152mm) F-aperture: F3.5 (W) to F5.1 (T)
Motion blur reduction	Electronic Image Stabilization
Zoom	Optical zoom: 4.0x (35mm film equivalent focal length 38 to 152mm) Digital zoom: 4.5x (Combined zoom: 18x)
Shooting distance (from the front of the lens)	Normal shooting: 60cm to infinity (W), 80cm to infinity (T) Macro shooting: 6cm to 80cm(W), 80cm to infinity (T)
Shutter speed	4.1/2000sec. (Manual 30sec.)
Number of recorded Pixels	[Still image] 12M, 10M (3:2), 9M (16:9), 8M, 5M, 3M, 0.3M [Movie] 720x480 (30fps, 15fps), 320x240 (30fps, 15fps) B (Best) / F (Fine) / N (Normal)
Picture quality mode	AUTO / ISO64 / ISO100 / ISO200 / ISO400 / ISO800 / ISO1600
ISO sensitivity (standard output sensitivity)	
Flash	[Mode] Auto / Red-eye flash / Flash On / Flash Off / Flash synchro / Red-eye flash + Flash synchro [Range] Approx. 50cm to 4.4m (W), approx. 80cm to 3.0m (T) (ISO 800)
Focus mode	Single AF / Multi AF (TTL 9-point) / Face Detection AF, AF aux. light
Exposure metering mode	Artificial Intelligence AE (Ai AE) / Center-weighted light metering / Spot metering
Exposure mode	Program AE (AE-lock available)
Exposure compensation	+2.0 to -2.0EV in 1/3EV steps
White balance mode	Auto / Daylight / Cloudy / Fluorescent lamp 1 / Fluorescent lamp 2 / Incandescent lamp / Manual
Recording media	SD memory card / SDHC memory card (up to 16GB) / Internal Memory (16MB)
Storage capacity	Approx. 180 shots (based on CIPA standard)
Recording format	[Still image] Exif2.2 (JPEG) [Movie] Quick Time Motion JPEG, Audio: G.711 (Monaural)
Shooting mode	Auto / Auto-Scene (Landscape / Portrait / Night portrait / Backlit portrait / Night Landscape / Macro), Underwater picture, Underwater movie / Manual / Stabilization / Movie / Scene (Sport, Children, Indoor, Leaf, Snow, Sunset, Fireworks, Glass, Museum, Landscape, Nightscape / Nightscape portrait / Portrait) / Panorama 3 pictures: 119° / 2 pictures: 84°
Panoramic field of view	
Waterproof	5m / 16ft *Based on General Imaging Company testing standards.
Other major shooting functions	Continuous Shooting: Approx. 1.39fps (Large / Fine mode), Detection functions (Face, Smile, Blink), Red-eye Removal
Other major playback functions	Single photo, Grid view, Slide show, Movie (Slow-Motion possible), Enlarged view (maximum 8 times), Voice, Histogram Display
Other Features	PictBridge, ExifPrint support, Multi-language support (26 languages)
LCD monitor	2.7-inch (Approx. 230,000 pixels) Automatic brightness adjustment function
Interface	USB2.0 / AV-OUT
Dimensions (WxHxD)	95.8x62x20.5mm / 3.8x2.5x0.8inch (excluding projecting parts)
Weight	Approx. 125g / 4.4oz (excluding battery and memory card)
Power Source	Rechargeable Lithium-ion Battery GB-10
Operating temperature	0°C to 40°C



**DX-GE5**  
**STEP-UP**  
**Guide**

**SEA&SEA SUNPAK Co., Ltd.**  
3-2-20 Saiwai-cho, Kawaguchi-shi, Saitama, Japan 332-0016  
TEL. +81-48-256-2251 / FAX. +81-48-256-2276

<http://www.seaandsea.jp>

The actual product colors may differ slightly from the printed versions shown here. The material you record may be used for your personal enjoyment. We recommend that you take care not to infringe upon the copyrights of other individuals. Recording is restricted in some cases at shows, performances and exhibitions even if it is intended for personal enjoyment. Please note that our company is not liable for any loss of data or secondary losses (such as the cost needed for photography) caused by a failure with or erroneous operation of the product, battery wear, memory card damage or other reasons. The specifications and appearance of the product are subject to change without notice. The number of pictures that can be taken and the photographic time may be restricted by the service life of the batteries when they are used. The LCD monitor panels are made with high-precision technologies and have been fully inspected after acceptance. However, some non-lit and permanently-lit pixels might be found that are caused by reasons attributed to the manufacturers. The camera conforms to the Standards of Voluntary Control Council for Interference by Information Technology Equipment (VCCI), which are intended for the Class B information technology equipment used at home. Nevertheless, the equipment may cause TV and radio interference in some cases. The minimum guarantee period for the availability of components that affect performance required for repairs is five years after the termination of manufacture. Please confirm with your dealer concerning the detailed specifications and limitations in use.

The contents of this brochure are effective as of March 2011.

- Handling of customers' personal information:  
Your personal information is managed and protected appropriately, pursuant to our Privacy Policy.
- Consumer Product Safety Act  
Concerning the safety of its products, SEA&SEA SUNPAK Co., Ltd. makes every effort to conform to the Consumer Product Safety Act.
- Export Control  
SEA&SEA SUNPAK Co., Ltd. makes every effort not to provide goods or technologies regulated by the Foreign Exchange and Foreign Trade Act.
- Chemical Substances  
SEA&SEA SUNPAK Co., Ltd. recognizes that environmental conservation is a serious social issue and makes every effort to ensure that its products do not contain regulated chemical substances.

Please contact the party indicated below if you have any questions or requests:

Safety Precautions	<ul style="list-style-type: none"> <li>*Please do not use a power source, voltage, cable or AC adapter other than those specified. Otherwise a fire or electric shock may result.</li> <li>*Please do not use the equipment if the screen fails to appear or there are other indications of failure. Otherwise a fire or electric shock may result.</li> <li>*Please do not use the equipment under abnormal conditions, such as when water is found inside, foreign matter is found inside, the device is emitting smoke or an odor. Otherwise a fire or electric shock may result.</li> </ul>
--------------------	---

A compact and full-featured waterproof compact digital camera set. 12.2 effective megapixels and 4x optical zoom.

Depth Rating  
55m / 180ft



DX-GE5

An ideal camera/housing set for underwater photography

Depth Rating  
5m / 16ft



G5WP-SS

DX-GE5 Camera and Housing Set **NEW**

**DX-GE5**

DX-GE5 Camera and Housing Set

\*Contact an authorized SEA&SEA dealer for price information.

- Detachable Macro Diffuser which adjusts light from the internal flash to make it uniform during macro shooting.
- The housing rear cover can be opened/closed while the housing is mounted on a camera tray.
- Luminous stickers help identify the buttons during night dives.
- The optional Wide-Angle Conversion Lens for DX-860G can be attached/removed even underwater.
- Equipped with underwater photo and video modes ideal for capturing perfect underwater images or video.
- Approx. 230,000-dot 2.7-inch LCD monitor that's easy to see when checking photos while shooting or during playback.
- Equipped with face detection function (for faces, smiles, and blinking) and image stabilizer function.
- Compatible with highly sensitive ISO 1600 photography.

<DX-GE5 Housing Specifications> ◎Dimensions (WxHxD): 140x109x82.5mm / 5.6x4.4x3.3inch / Weight: Approx. 385g / 13.5oz (excluding hand strap) ◎Construction: polycarbonate ◎Depth rating: 55m / 180ft ◎[Compatible strobes] YS-01, YS-02, YS-250PRO \*The YS-110a can be made to be compatible through a firmware update. For details, please inquire at a SEA&SEA dealer.

<Accessories> ◎Accessories for the G5WP-SS camera: USB / video cable, lithium-ion battery, battery charger, hand strap. ◎Accessories for the DX-GE5 housing: LCD monitor hood, hand strap.

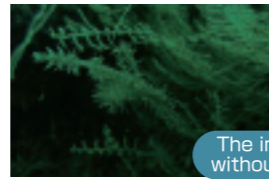
Depth Rating 55m / 180ft	Fiber-optic cable socket	Wide-angle conversion lens for the DX-860G (optional)	Accessory shoe	Macro Diffuser	Effective 12.2 mega-pixel CCD	Large 2.7-inch LCD monitor	Optical 4.0x zoom Digital 4.5x zoom	Face detection AF & image stabilizer	Depth Rating 5m / 16ft
DX-GE5					G5WP-SS				



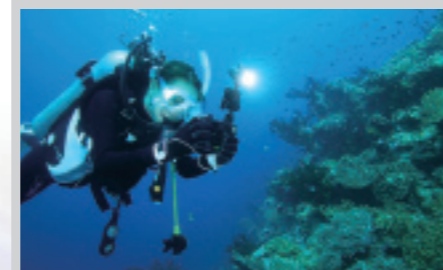
## Take images using an external strobe (optional)



Image of an Ornate Ghost Pipefish protecting its roes. The image was taken with the YS-02 manual strobe. With the smallest light output from the strobe, even the texture of the roes can be depicted.



The image was taken without external strobe

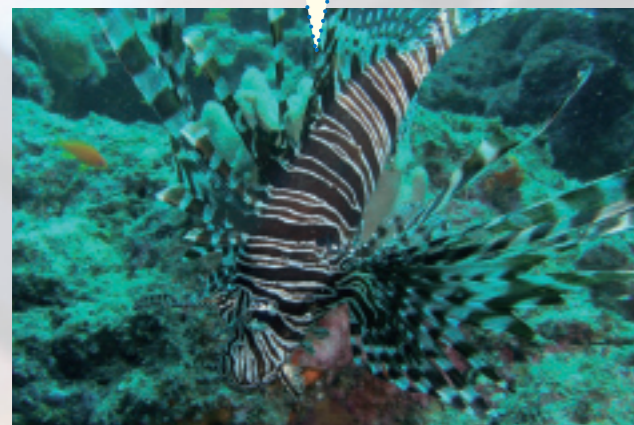


As the DX-GE5 housing is equipped with an accessory shoe, a small strobe or light, including one produced by other manufacturers can be mounted on it.

The image was taken with the YS-02 strobe

■ Camera used: DX-GE5 Camera and Housing Set ■ Shooting mode: Underwater Picture mode / Macro Picture mode  
 ■ Exposure metering mode: Ai AE ■ White balance mode: Auto ■ Exposure compensation: -1.0  
 ■ ISO sensitivity: 100 ■ Strobe: YS-02 x 1 ■ Location: Papua New Guinea-Loloata Island

The image of a lion fish on the right was taken with the YS-01 strobe in DS-TTL mode. Colors of the fish are beautifully depicted and the whole image is stereoscopically represented. The image on the left was taken without external strobe. As you can see, the image has become monochromatic and blurry.



■ Camera used: DX-GE5 Camera and Housing Set  
 ■ Shooting mode: Underwater Picture mode / Macro Picture mode  
 ■ Exposure metering mode: Ai AE  
 ■ White balance mode: Auto  
 ■ Exposure compensation: -0.7  
 ■ ISO sensitivity: 100  
 ■ Strobe: YS-01 x 2 (the left image)  
 ■ Location: Papua New Guinea: Loloata Island

Image was taken without external strobe

Image was taken with external strobe (the YS-01)

## Benefits of using an optional external strobe

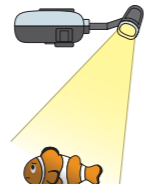
### POINT-1

With the camera's onboard flash alone, the light can only illuminate the subject just in front of the lens.



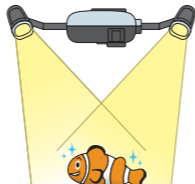
### POINT-2

When using an external strobe, you can illuminate the subject with more light. Even if the subject is not located in front of the lens, the light will reach the subject. However, only one side of the subject will be illuminated and shade may be produced.



### POINT-3

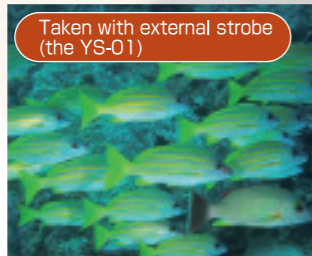
When two external strobe are used, you will have enough amount of light both for wide-angle and macro photography. With two external strobes, shade can be eliminated or softened.



Taken with only the camera's onboard flash



Taken with external strobe (the YS-01)



YS-01

Compact, but versatile and powerful underwater strobe with both DS-TTL and manual functions. The strobe is equipped with target light. Guide number is 20 and beam angle is 100 x 100 degrees. Suitable strobe for both wide-angle and macro photography.



YS-02

Compact and affordable manual strobe, brother model of the YS-01, without target light and DS-TTL function. Equipped with light level control in increments of 10 steps. Because of its Pre-flash cancel function, the strobe is compatible with a wide range of digital cameras with a pre-flash made by other than SEA&SEA.

\*Fiber-optic cable L-type (optional) is required to connect YS-01/02 to a digital camera housing.

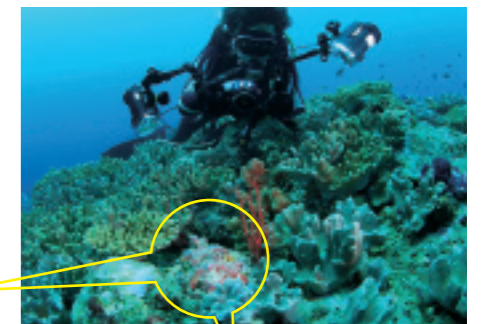
Cameras' onboard flash has been designed to be used on land. For this reason, it does not have enough guide number (intensity of light which strobe emits) for underwater photography. External strobe is required for underwater photography.

## Images taken with wide-angle conversion lens (optional)



With the wide-angle conversion lens

■ Camera used: DX-GE5 Camera and Housing Set  
 ■ Shooting mode: Underwater Picture mode / Macro Picture mode  
 ■ White balance mode: Auto ■ Exposure compensation: 0 ■ ISO sensitivity: 100  
 ■ Strobe: YS-01 x 1 ■ Location: Papua New Guinea-Loloata Island



With the standard lens at the wide-angle end



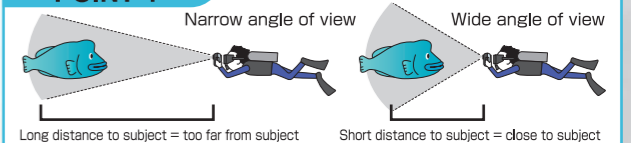
There is a huge stone fish between corals. Approaching the subject to the minimum shooting distance and using the YS-01 strobe in DS-TTL mode (auto exposure mode). As you can see the image taken with the standard lens cannot photograph the whole fish. With the wide-angle conversion lens, not only is the whole fish photographed, but the fish is depicted stereoscopically. As the external strobe (the YS-01) was used, the colors of the fish are vividly reproduced.



This image was also taken with the wide-angle conversion lens. The long head of the flathead with a sense of perspective is depicted.

■ Camera used: DX-GE5 Camera and Housing Set  
 ■ Shooting mode: Underwater Picture mode / Macro Picture mode  
 ■ Exposure metering mode: Ai AE  
 ■ White balance mode: Auto  
 ■ Exposure compensation: -0.7  
 ■ ISO sensitivity: 100  
 ■ Strobe: YS-01 x 2  
 ■ Location: Papua New Guinea Loloata Island

### POINT-4

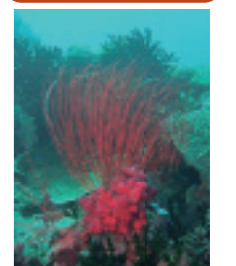


\*When the wide-angle conversion lens is used, slight vignetting (dimming) may occur in the four corners of the image. Slightly zoom in to telephoto to eliminate vignetting.

Taken with the standard lens at the wide-angle end



Taken with the wide-angle conversion lens for DX-860G



The image on the left was taken without the wide-angle conversion lens. The image on the right was taken with the wide-angle conversion lens. Both of the images were taken from exactly the same distance. With the wide-angle conversion lens, images with a sense of perspective can be taken with wider angle of view.



### Wide-Angle Conversion Lens for DX-860G

This wide-angle conversion lens covers a maximum field angle equivalent to approx. 28mm (35mm film camera equivalent) when used with the DX-GE5 underwater.

## Recommended system samples

### System sample with YS-01 strobe.

A system that offers basic strobe photography. Subject can be illuminated from the above and the side.

DX-GE5 Camera and Housing Set  
 YS-01  
 Fiber-Optic Cable (L-type)  
 SEA ARM 7 Compact



### System sample with two YS-01 strobes and wide-angle conversion lens

A very versatile system for various types of photography. With the symmetrical strobe configuration, the underwater balance is ideal.

DX-GE5 Camera and Housing Set  
 Wide-Angle Conversion Lens for DX-860G  
 YS-01 x 2  
 Fiber-Optic Cable (L-type) x 2  
 SEA ARM 7 Compact  
 SEA ARM 7 Additional Arm

