

NEW

DX-6G

camera/housing system

06666

Fun and easy underwater camera system

Macro Flashlight Diffuser with Strap, Hand Strap for DX-6G, Power Adapter, Rechargeable Lithium-Ion Battery, Macro Stand, USB cable, Strap for 6G, Silicon Grease, O-ring Remover
 Spare O-ring [62169](#) Spare Battery D-LI92 [54104](#)

6G Camera

Housing is depth rated to 55m/180ft, rugged, lightweight and compact. Exclusively designed for the camera.



6G camera Main Features



5 x zoom lens from wide-angle 28mm* reproducing high-definition and crystal-clear images.

A 16 megapixels CMOS together with a high-performance image engine produces low-noise and wide dynamic range images.
 *35mm film camera equivalent



Equipped with macro mode. As close as 1cm / 0.4inch to the subject.

Enables you to bring the lens as close as 1cm to the subject without a close-up lens, enabling enlarged picture of a small objects.



Records 30fps high definition movies.

Records 264/30fps high definition movie. As equipped with HDMI terminal (type D), the camera can be connected to a television with ease.

Equipped with Underwater Mode for optimum underwater photos and videos.



This mode uses white balance optimized for underwater photos, making colors appear more natural by adding reds that tend to get lost in photos taken under water.

DX-6G Housing

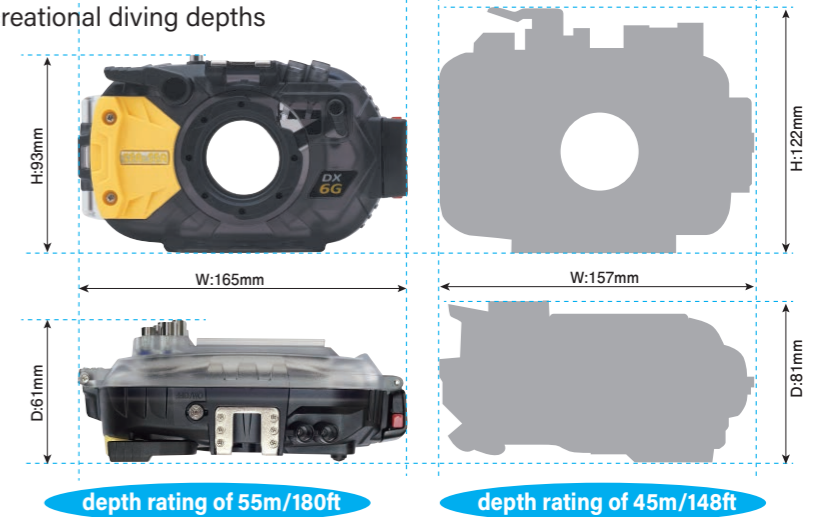


Housing is depth rated to 55m/180ft, rugged, lightweight and compact. Exclusively designed for the camera.

Rugged and durable housing made in Japan with time-proven construction. Wide-angle conversion lens available.
 (DX-1G/2G wide-angle conversion lens compatible)

Comparison with competitor's housing.

Designed to be compact and low-profile, the housing can snugly fit into a BC pocket. Depth rating of 55m/180ft. provides reliable operation at all recreational diving depths



depth rating of 55m/180ft

depth rating of 45m/148ft

Comes with Macro ring diffuser as standard

Diffuses light from the built-in flash evenly, illuminating whole image when macro photo is taken.



without macro ring diffuser



with macro ring diffuser

DX-6G housing's main functions



Flash shutter lever
 When an external strobe such as the YS-03 is used, the flash shutter will block out light from the camera's built-in flash.



Fiber-optic cable sockets for external strobes
 Up to two external strobes such as the YS-03 can be connected with a fiber-optic cable.

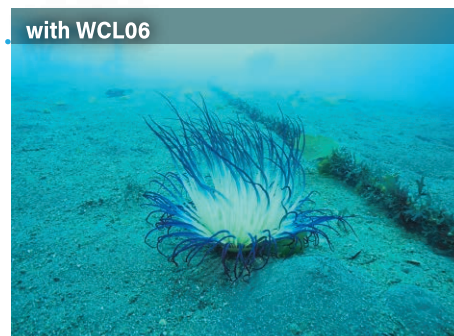
Optional accessories



52152



without WCL06



with WCL06

WCL06

Wide-angle conversion lens x 0.6.
Can be attached and detached underwater.

When the optional SS bayonet wide-angle conversion lens WCL06 is mounted, the angle of view will increase providing stunning images. When the bayonet mount is used, the lens can be attached and detached with ease, so as not to miss any critical shots.

Specifications

[Underwater angle of view] 94 degrees (150 degrees on land) [Magnification] 0.6x [Depth rating] 60m/200ft
[Weight] 400g / 14oz [Dimensions (DIA x D)] 97 x 50.5mm / 3.8 x 2.0 inches
[Construction] corrosion-resistant aluminum alloy, anodized body (black).

Desiccant Pack (OZO)

62148



OZO has about four times the hygroscopicity of silica gel. Furthermore, it excels in rapid moisture absorption and continues to absorb moisture without releasing moisture even in low humidity. It solidifies when it cannot absorb more moisture, so the replacement time can be easily determined.

Specifications

[Dimensions] 60mmx10mm [Weight] 0.55g



Moisture absorption test



Strobe & Grip Set

Adventure Set

06669



Pro Set

06672



- DX-6G Set
- YS-03 Strobe
- Fiber-Optic Cable II M/2 Connectors
- Flexible Grip 280 & Single Tray

- DX-6G Set
- YS-03 Strobe
- Wide-angle conversion lens/WCL06
- Fiber-Optic Cable II M/2 Connectors
- Flexible Grip 280 & Single Tray

Specifications

6G Camera

Lens : RICOH lens, 11 elements in 9 groups (5 aspherical elements)
Focal Length : 5 - 25 mm (in 35mm format equivalent) Approx. 28 - 140mm Maximum Aperture F3.5(W) - F5.5(T) Zoom Optical Zoom 5X Digital Zoom approx. 72X
Number of Effective pixels : Approx. 16 megapixels
Image Sensor : 1/2.3" CMOS
Display : 2.7" Wide LCD, approx. 230K dots, AR Coating(Cover only)
* Waterproof (Up to 14m (45ft.) for 2hours)
* Shock proof (Up to 1.6m (5.2ft.))
* Operating Temperature -10° C to 40° C
Dimensions : Approx. 122.5 (W) x 61.5 (H) x 29.5 (D)mm / 4.8 (W) x 2.4 (H) x 1.2 (D) inches (excluding controls and projections)
Weight : With battery & SD card Approx. 193g / 6.8 oz. (loaded and ready)
Body : Approx. 173g / 6.1 oz.(without battery and SD memory card)

DX-6G Housing

[Construction] Polycarbonate
[Depth rating] 55m / 180ft
[Dimensions (WxHxD)] 165 x 93 x 61.5 mm / 6.5 x 3.7 x 2.4 inches
[Weight] Approx. 412g / 15oz (Housing only) / 605g (including camera,battery,SDcard)
[Under Water Weight] Approx.30g

Compatible Strobes

- YS-03
- YS-D1: only Slave TTL mode
- YS-D2: Slave TTL mode or YS-D2 shipped after May 2019 when the custom mode is set to E position in DS-TTL mode.
- YS-01 is not compatible.

More Info



DX-6G camera/housing system

Rugged sports camera with depth rating of 14m/46ft and drop impact resistance of 1.6m/5ft



U/W housing with depth rating of 55m/180ft



Bayonet mount for wide-angle lens

