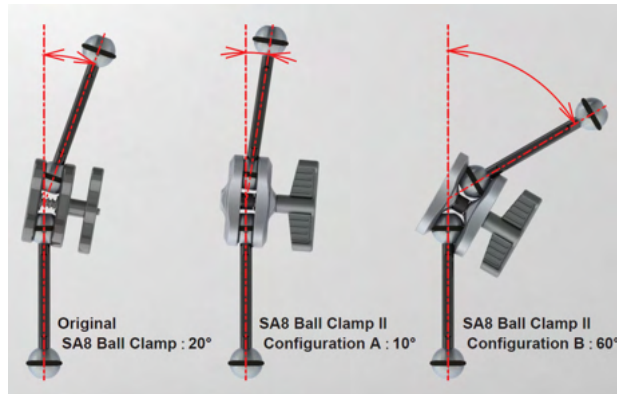


BALL CRAMP

SA8 Ball Clamp II **22138**

The ball clamp can be used in two ways by rearranging the parts.

[Size] Width 66 x Height 71 x Depth 26 mm
[Weight] 97g
[Material] Corrosion-resistant aluminum alloy, alumite treatment



Type-A

Clamping force-oriented

The clamping force is stronger than before, and the holding force of arms, etc., is improved by reducing the range of movement.

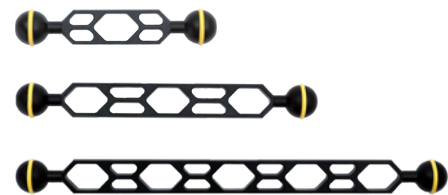


Type-B

Emphasis on range of motion

Expanded range of motion while maintaining conventional clamping force. Enables a wider range of handling.

DOUBLE BALL ARM



Precision arm with light weight and high rigidity machined from aluminum alloy. The SA8 Ball Clamp II can be combined with various length arms and joint bases to create flexible lighting systems.

SA8 Double Ball Arm S **22112**

[Length] 143mm
[Weight] 60g
[Material] corrosion-resistant aluminum alloy

SA8 Double Ball Arm M **22113**

[Length] 223mm
[Weight] 80g
[Material] corrosion-resistant aluminum alloy

SA8 Double Ball Arm L **22114**

[Length] 323mm
[Weight] 110g
[Material] corrosion-resistant aluminum alloy



STROBE HEAD S

22115

As a joint between the end of an arm and a YS series strobe.

[Length] 68.5mm
[Weight] 41g
[Material] Corrosion-resistant aluminum alloy



STROBE HEAD M

22126

As a joint between the end of an arm and a YS series strobe.

[Length] 121.3mm
[Weight] 50.5g
[Material] Corrosion-resistant aluminum alloy



DOUBLE STROBE HEAD

22129

Lighting can be branched to the left or right at the end of the armwork.

[Length] 120mm
[Weight] 70g
[Material] Corrosion-resistant aluminum alloy



DOUBLE BALL STROBE HEAD

22127

Two-light lighting in the form of branching branches is possible.

[Length] 121.3mm
[Weight] 70g
[Material] Corrosion-resistant aluminum alloy



BALL BASE

22119

Can be attached directly to extra grips, etc.

[Height] 47mm
[Weight] 37g
[Material] Corrosion-resistant aluminum alloy



ACC. SHOE BALL BASE II

22139

Large lock nut employed. Includes hook plate to prevent disconnection.

[Height] 67mm
[Weight] 55g
[Material] Corrosion-resistant aluminum alloy



HOT SHOE ARM

29501

Mini arm to be attached to the accessory shoe.

[Height] 70.7mm
[Weight] 50g
[Material] Corrosion-resistant aluminum alloy

WEB Site



SEA&SEA
THE UNDERWATER IMAGING COMPANY
SEA&SEA Co., Ltd.

4-8-11 Nagasaki, Toshima-ku, Tokyo 171-0051, JAPAN
TEL 03-5926-9320 / FAX 03-5926-9321

The specifications of the products in this catalog are subject to change for improvement without notice. Product photographs in this catalog may differ slightly from the actual product. The information in this catalog is current as of March 2022. Company names and product names in this catalog are trademarks or registered trademarks. No part of the photographs, illustrations or text in this catalog may be used without permission.

Safety Precautions



WARNING

Please read the instruction manual before use to ensure correct and safe use.

Do not use power supplies, voltages, connection cords, or AC adapters other than those specified. Doing so may cause fire or electric shock. Do not use the product in a malfunctioning state, such as when the screen does not display. Doing so may cause fire or electric shock. Do not use the product under abnormal conditions such as water or foreign objects getting inside, smoke coming out, or strange smells. Doing so may cause fire or electric shock.



Cover Photo

Takuya Nakamura

An underwater photographer, he first encountered diving at the age of 10 in the Keramas Islands of Okinawa and was captivated by the underwater world. He has been going to the Henoko Sea, his life's work, for more than 17 years to take photographs. He writes and lectures on the drama of life in the underwater world, and also advises camera manufacturers. Through appearances on TV, radio, and at events, he has often spoken about environmental issues, including Okinawa's oceans.

For after-sales service or repair, please contact our customer service.

Customer Service TEL 03-5926-9322

www.seaandsea.co.jp

2022.03

SEA&SEA
THE UNDERWATER IMAGING COMPANY

U/W STROBE



2022
— SINCE 1972 —

Photo by Takuya Nakamura

YS-D3mkII LIGHTNING

03123

Max. GN 33/2 shutter-chance priority levels
High performance strobe with recycle function



Excellent rapid-fire performance Shutter chance priority 2-step recycle time function

When the YS-D3 fires at a guide number (GN) of 16 or less, the wait time before the next flash is 0 seconds. Furthermore, even after firing at GN 22, which is twice the amount of light, the lens can be charged in as little as 0.8 seconds.

In addition, immediately after a full flash (GN33), when power is built up in the strobe capacitor until it is ready to emit GN22, the strobe first notifies the user with an LED lamp and sound to signify that it is ready to fire once, and then again when it is fully ready to fire.

This is a "shutter chance priority" function that allows you to take more shutter shots without taking your eyes off the viewfinder, even in scenes where you want to take as many shots as possible, such as when a rare subject passes by quickly.

Optical Cable Supported	Sync cable Supported	DS-TTL II	Slave TTL	Manual Dimming
BEEP Sound	Target Lights	Guide No. 33	Irradiation Angle 105°*80°	Recycle Time 0.8s*

*When using nickel-hydrogen AA batteries (in the case of GN22)
Use of a fiber-optic cable other than our genuine fiber-optic cable may adversely affect the dimming performance and may not allow the strobe to perform as it should. Use of a genuine Fiber-Optic Cable is recommended.

Powerful luminescence equivalent to a maximum of approximately 509,600 lumens

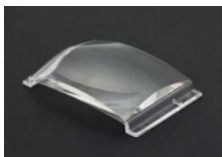


Natural Light



YS-D3mkII used

High Performance



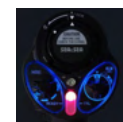
Located in front of the light-emitting tube
Aspherical toroidal lens

Newly designed circuitry and light-emitting unit give the YS-D3mkII excellent performance. The maximum guide number is 33, which is a large light output. The newly developed "Aspherical Toroidal Lens" provides uniform light distribution not only at the center of the luminescence but also at the periphery, making it ideal as an external light source.

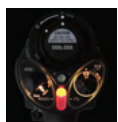
The optional dome diffuser can widen the beam angle up to 170°.

Backlit panels that are effective in dark environments

The indicator color on the back of the YS-D3mkII changes according to the position of the mode switch. The different colors are blue (DS-TTLII mode), light blue (slave TTL mode), orange (manual mode with pre-flash) and green (manual mode without pre-flash), making it easy to identify the control system positioning even when night diving.



DS-TTLII mode

With pre-flash
Manual modeNo pre-flash
Manual mode

WEB Site



Strobe Snoot



28115

An adapter that turns a strobe light into a spot light. An internal prism allows the optical axis of the target light to be perfectly aligned with the optical axis of the strobe light. The beam aperture is 25 mm.

Dome Diffuser



28116

Beam angle is increased to 150° x 170°, which is useful when using a fish-eye lens or when lighting with soft light. Guide number is reduced by -1.5 EV. Can be attached and detached underwater.

Flash Prism



50127

Light guiding prism for emitting light from YS-D3mkII without using a fiber-optic cable. (Only manual light emission is supported.) Effective for backlit photography, etc.

Ball Base 35



28117

Ball base tilted 35° compared to the straight type. This makes it easier to lower the strobe light emitting surface to the rear, making it suitable for shooting when using a dome port.

YS Base



28114

YS type mounting base. Combined with the SA8 strobe head series, it can be used as a starting point for various lighting developments.

Strobe Cover



51291

The surface is made of mesh skin with fine mesh finish. Back side is neoprene strobe cover.

YS-01 SOLIS

03124



Optical Cable Supported	DS-TTL II	Slave TTL	Manual Dimming	Target Lights
Guide No. 20	Irradiation Angle 100°*100°	Recycle Time 1.9s*		

*When using Ni-MH AA batteries.
When synchronizing with the camera's built-in flash, use Fiber-Optic Cable II. Use of a Fiber-optic cable other than our genuine Fiber-optic cable may adversely affect the light modulation performance and may prevent the strobe from performing as intended. Use of a genuine Fiber-Optic Cable is recommended.

TTL and manual strobes from wide-angle to macro Compact strobe for all-around use

Equipped with DS-TTLII, same as higher-end models

DS-TTLII synchronizes with the camera's flash and automatically adjusts the light intensity to fire. Furthermore, DS-TTLII offers more stable light compensation than its predecessor, allowing the flash to fire in a way that better reflects the photographer's intent.



Example of DS-TTLII Plus correction (using one light on the right side)

WEB Site



YS-03 SOLIS

03125



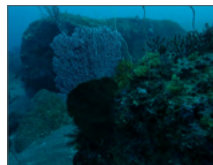
Optical Cable Supported	Slave TTL	Guide No. 20	Irradiation Angle 100°*100°	Recycle Time 1.9s*
-------------------------	-----------	--------------	-----------------------------	--------------------

*When using Ni-MH AA batteries.
When synchronizing with the camera's built-in flash, use a fiber-optic cable. Use of a fiber-optic cable other than our genuine fiber-optic cable may adversely affect the light modulation performance and may not allow the strobe to perform as it should. Use of a genuine Fiber-Optic Cable is recommended.

High power with easy operation
High cost performance strobe with the ultimate in simplicity

High-power strobe with easy operation

No complicated operation is required. Just turn on the power switch to emit the proper amount of light. Light output, light distribution, and recycle time are the same as those of the YS-01SOLIS, a high-performance strobe.



Natural Light



YS-03SOLIS used

WEB Site



SYNCHRO CODE

Synchro Code/N
Dual Synchro Code/N



A sync cord is necessary for electrical connection to Nikonos 5-pin type underwater strobes as well.

In addition to the standard Sync Cord/N, there is a Dual Sync Cord/N for dual strobe deployment.

①Synchro Code/N

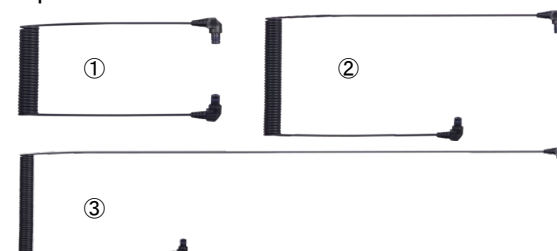
17100

②Dual Synchro Code/N

03470

OPTICAL FIBER CABLE

Fiber-optic cable II



Highest quality fiber optic cable with multiple cores of 613 cores in one fiber. Radiation loss is small even when the fiber is bent and the optical axis is misaligned inside, and the start/stop signal emitted from the camera's built-in flash can be transmitted to the strobe side with super sensitivity. Compared to the single-core type, it is more resistant to bending and less likely to break against impact.

①Fiber-optic cable II S/2 [overall length] 310mm

50135

②Fiber-optic cable II M/2 [overall length] 453mm

50128

③Fiber-optic cable II L/2 [overall length] 725mm

50133