

PRODUCT CATALOG
SPRING 2023



JAPAN QUALITY

Manufactured in Japan, supported in Japan

BRAND

NEW

D3.





MADE IN JAPAN

New



YS-D3 DUO

03129 BLACK

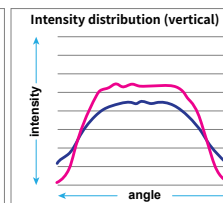
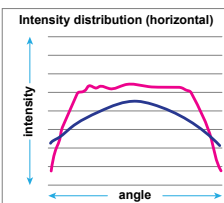
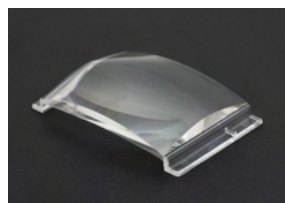
Shooting with the Optimum Flash Level Equipped with RC mode

The RC mode conforming to the "SYSTEM Wireless RC Flash System" is equipped. The flash output is optimally controlled when combined with the target digital camera.



Aspherical toroidal lens

An aspherical toroidal lens placed in front of the light-emitting tube provides uniform light distribution characteristics all the way to the periphery, making it ideal as an external light source.



Comparison of illuminance distribution when only light source is used and when an aspherical toroidal lens is used (Simulation results)

— Without aspheric toroidal lens
— Aspherical toroidal lens available

Backlit panel for excellent visibility

The color of the indicator on the back changes for each mode. The dial position is clearly visible even during night diving.



Guide Number

33

Without diffuser

Illumination Angle

100°×110°

With diffuser

Depth of pressure

100m

Color Temperature

5500K

With diffuser

Recycle Time

1.7sec.

When using Ni-MH batteries

Number of luminous flashes

220times

When using Ni-MH batteries



YS-D3 MKII LIGHTNING

03123 BLACK

Powerful luminescence equivalent to a maximum of approximately 509,600 lumens.



▲Natural light

▼with YS-D3mkII



Guide Number

33

Without diffuser

Illumination Angle

100°×110°

With diffuser

Depth of pressure

100m

Color Temperature

5500K

With diffuser

Recycle Time

1.7sec.

When using Ni-MH batteries

Number of luminous flashes

220times

When using Ni-MH batteries



YS-01 SOLIS

03124 BLACK

Equipped with DS-TTLII, same as higher-end models



Example of DS-TTLII Plus correction (using one light on the right side)



Guide Number

20

Without diffuser

Illumination Angle

110°×110°

With diffuser

Depth of pressure

75m

Color Temperature

5250K

With diffuser

Recycle Time

1.9sec.

When using Ni-MH batteries

Number of luminous flashes

300times

When using Ni-MH batteries



YS-03 SOLIS

03125 BLACK

High cost performance with the ultimate in simplicity



▲Natural light

▼with YS-03SOLIS



Guide Number

20

Without diffuser

Illumination Angle

110°×110°

With diffuser

Depth of pressure

75m

Color Temperature

5250K

With diffuser

Recycle Time

1.9sec.

When using Ni-MH batteries

Number of luminous flashes

300times

When using Ni-MH batteries

Snoot

DUO YS-D3

28115



An adapter that turns a strobe light into a spot light. An internal prism allows the optical axis of the target light to be perfectly aligned with the optical axis of the strobe light. The beam aperture is 25 mm.

Dome Diffuser

DUO YS-D3

28116



Beam angle becomes 150° x 170°, which is useful when using a fish-eye lens or when lighting with soft light. Guide number is reduced by -1.5 EV. Can be attached and detached underwater.

Flash Prism

DUO YS-D3

50127



Light guiding prism for emitting light from YS-D3mkII without using a fiber-optic cable. (Only manual light emission is supported.) Effective for backlit photography, etc.

Strobe Ball Base 35

DUO YS-D3

28117



Ball base tilted 35° compared to the straight type. This makes it easier to lower the strobe light emitting surface to the rear, making it suitable for shooting when using a dome port.

Strobe YS Base

DUO YS-D3

28114



YS type mounting base. Combined with the SA8 strobe head series, it can be used as a starting point for various lighting developments.

Strobe Cover

DUO YS-D3

50291



The surface is made of mesh skin with fine mesh finish. Backside is neoprene strobe cover.

Diffuser Product Accessory

DUO YS-D3

28118



When installed, the beam angle is widened to 100° x 110° to soften the edges of light distribution. Light intensity is reduced by -0.5 EV.

Diffuser Product Accessory

YS-01 YS-03

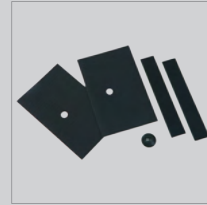
28109



When installed, the beam angle increases to 110° x 110° to soften the edges of the light distribution.

Strobe Mask Set

50109

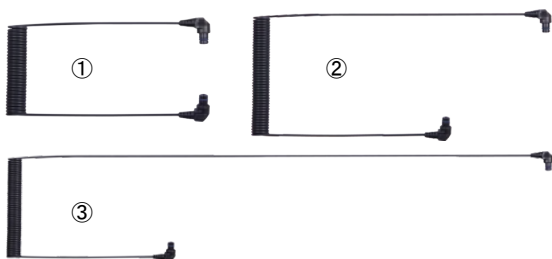


Mask and fiber-optic cable are attached to the built-in flash section of a compact digital camera housing.

*The mask must be cut to fit the housing.
*Some models cannot be used.

Fiber Optic Cable II

DUO YS-D3 YS-01 YS-03

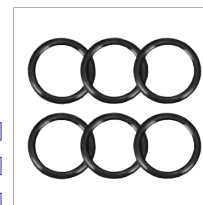


Highest quality fiber optic cable with multiple cores of 613 cores in one fiber. Radiation loss is small even when the fiber is bent and the optical axis is misaligned inside, and signals emitted from the camera's built-in flash can be transmitted to the strobe side with super sensitivity.

- ①Fiber-optic cable II S/2 [Total length]310mm [50135](#)
- ②Fiber-optic cable II M/2 [Total length]453mm [50128](#)
- ③Fiber-optic cable II L/2 [Total length]725mm [50133](#)

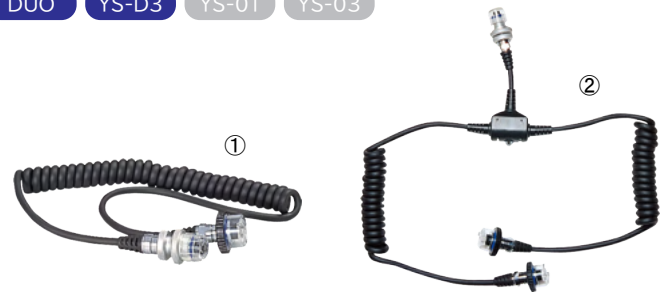
Fiber-optic cable O-ring (6pcs)

92974



Syncro Code

DUO YS-D3 YS-01 YS-03



A sync cord is necessary for electrical connection to Nikonos 5-pin type underwater strobes as well. In addition to the standard Sync Cord/N, there is a Dual Sync Cord/N for dual strobe deployment.

- ①Syncro Code/N [17100](#)
- ②Dual Sync Cord/N [03470](#)



MADE IN JAPAN

New



● BLACK

● SILVER



MDX-α7RV U

for Sony α7RV

from **07150** to **07152** BLACK
from **07153** to **07155** SILVER

*Port is sold separately.

Looking to the Future Universal Design

The back acrylic panel is more than twice as large as before to improve visibility of the monitor and reduce the underwater weight. Furthermore, it is a sustainable design that can be used with newer cameras with minimal parts replacement.



Newly designed Fiber-optic cable cover

Newly designed fiber-optic cable cover included. Prevents optical cable terminals from falling out and smartly protects light-emitting panels and cable terminals. Includes a strap to prevent loss of the cover.



By tuning Various models can be supported by tuning

MDX-α7RIV U

for Sony α7RIV

from **07138** to **07140** BLACK
from **07141** to **07143** SILVER

MDX-α7IV U

for Sony α7IV

from **07120** to **07122** BLACK
from **07123** to **07125** SILVER

MDX-α7SIII U

for Sony α7SIII

from **07132** to **07134** BLACK
from **07135** to **07137** SILVER

MDX-α9II U

for Sony α9II

from **07126** to **07128** BLACK
from **07129** to **07131** SILVER

MDX-α1 U

for Sony α1

from **07144** to **07146** BLACK
from **07147** to **07149** SILVER

Body Size

W330×H169×D137mm

Weight

about 2,900g

Depth of Pressure

100m

Material Properties

Body: Machined corrosion-resistant aluminum alloy
Grip: Corrosion-resistant die-cast aluminum

▶ MDX-U HOUSING SERIES

The MDX-U (universal) housing is a new series with a revolutionary system that C&C's development division, celebrating its 50th anniversary, has now fully introduced to the world. By replacing some parts or replacing button shafts, it is possible to accommodate different camera models

without modifying the housing body. This implies the possibility to support new camera models in the future with minimal upgrade costs for back panels, pedestal parts, etc. without having to purchase expensive housings every time a new camera model is released.



MDX-α1U
for Sony α1



INSTALL



MDX-α7RIVU
for Sony α7RIV

The change of compatible models will be done in our custody. For details, please inquire at the contact person in charge.

▶ Strobes Synchro System

Three optional strobe connection methods are available.

1 Optical TTL Connections

The Optical Converter S2 converts a camera's strobe light signal into LED light and synchronizes it with a YS strobe. This high performance converter is also capable of TTL auto exposure control. The Optical Converter S2 is a high-performance converter with TTL auto-dimming capability. The cost includes installation labor.



Optical Converter/S2

50151

A compact transmitter that attaches to the camera's accessory shoe and converts TTL signals to LED light signals.

2 Optical Manual Connection

For those who do not need TTL photography, manual flash can be used by connecting a fiber-optic cable.

Manual flash trigger/SU

50146



A device that converts strobe light emission signals into LED light. A remaining battery level check function reduces the risk of a strobe being unable to emit light due to a dead battery.

3 Electrical Connections

YS strobes can be electrically connected with a sync cord.

Strobe connector/N

50147



Extension connector for attaching a strobe connector to the housing.

Sync cord 2-pin connector set

50122



User-installable and interchangeable 2-pin strobe connector and sync connector.

▶ Extended Functional Customization Kit

This kit provides access to controls that are not available as standard, such as the drive mode dial, focus mode dial, and shooting mode lever. For details on each model, please refer to our website.



50148 for MDX-α1U

50149 for MDX-α9IIU

50150 for MDX-α7IVU

50152 for MDX-α7RVU

Installation will be done by our company. For details, please contact the person in charge.



MDX-R5

for Canon EOS R5

06198 ● BLACK



Body Size

W345×H173×D164mm

Weight

about 2,900g

Depth of Pressure

100m

Material Properties

Body: Machined corrosion-resistant aluminum alloy
Grip: Corrosion-resistant die-cast aluminum



MDX-Z7II

for Nikon Z7II/Z6II/Z7/Z6

06201 ● BLACK



Body Size

W339×H169×D158mm

Weight

about 2,700g

Depth of Pressure

100m

Material Properties

Body: Machined corrosion-resistant aluminum alloy
Grip: Corrosion-resistant die-cast aluminum

Spare O-Ring Set

| Product No. | Supported models |
|-------------|--|
| 62160 | ML Port |
| 62145 | RDX Port |
| 62101 | DX Macro Port 15II, 60II, 90II, DX Extension Ring 20L, 30L, 40L, NX Port, DX Macro Port 15, 52, 87 |
| 62152 | VF45 1.2x, VF180 1.2x |
| 56290 | Compact Macro Port, CX Compact Dome Port |
| 62144 | RDX Housing, MDX-α7II, EM5 MarkII |
| 62158 | MDX-α6000, α6300 |
| 62148 | MDX-5D MarkIV, 80D, 7D MarkII, 5d MarkIII ver.2, 70D, D7000 |
| 62146 | MDX-D850, D810, D800, D700, D500 |
| 62137 | MDX-40D, PRO 5D MarkII |
| 62147 | MDX-α7III, D7100, D600, D300s, MDXL-α7IV |
| 62155 | MDX-GRD IV |
| 62121 | MDX-αU Series, α7RV, α7RIV, α7IV, α7sIII, α9II, α1, R5, R, Z7II, 5D MarkIII, DX-D50, 350D, D200, D80 |
| 10580 | YS-30, 90, 110α, 01, 02, 03, D1, D2, 01 SOLIS, 03 SOLIS, D3 LIGHTNING, D3 MarkII LIGHTNING, D3 DUO |
| 17210 | Synchro Code/N, Dual Sync Code/N |
| 62134 | MDX-RX100III, RX100II, RX100, DX-1G, 2G |
| 62169 | DX-6G |

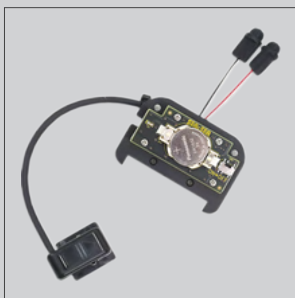
Leak Alarm Unit [46135](#)



This alarm unit allows you to check waterproofness on land by monitoring the internal pressure by making the inside of the housing negative pressure. When an air leak (change in internal pressure) is detected, an LED lamp warns the user that there is a factor that could cause flooding before entry, thus preventing accidents before they happen. In the unlikely event of water entering the housing underwater, the leak sensor reacts and warns with an LED indicator.

- Measure the air pressure inside the housing and the presence or absence of water ingress every 0.2 seconds (200ms). The inside of the housing is constantly monitored.
- The air pressure value is converted to a 20°C value to make a judgment. Pressure fluctuations caused by heat generated by the camera or changes in water temperature will not cause malfunctions.
- The battery life is approximately 250 hours with the power on, allowing for a long period of use with a single battery replacement.
- Battery life is approximately 250 hours with the power on, allowing for long-term use with a single battery replacement.

Manual Flash Trigger



A device that converts strobe light emission signals into LED light. The remaining battery level check function reduces the risk of a flash failure due to a dead battery.

*Only available with manual flash.
[Operating time] Approx. 100 hours
*CR1632 battery is not included.

- ① Manual Flash Trigger/CN [50144](#)
- ② Manual Flash Trigger/S [50145](#)
- ③ Manual Flash Trigger/SU [50146](#)

- ① CN Compatible Housing MDX-D810,D7100,D500,D850,Z7,Z7II,5DmarkIII ver.2,5DmarkIV,R5
- ② S Compatible Housing MDX-α7II,α7III,α7IV
- ③ SU Compatible Housing MDX-α7RVU,α7IVU,α7RIVU,α1U,α9IIU,α7SIIU

Optical Converter



A compact transmitter that attaches to the camera's accessory shoe and converts TTL signals to LED light signals.

- ① Optical Converter for MDX/S2 [50151](#)
- ② Optical Converter for MDX/N1 [50126](#)
- ③ Optical Converter for MDX/C2 [50142](#)
- ④ Optical Converter for MDX/CR [50143](#)

*S2 only: Installation with housing in place.

- ① S2 Compatible Housing MDX-α7RVU,α7IVU,α7RIVU,α1U,α9IIU,α7SIIU,α7II,α7III,α7IV
- ② N1 Compatible Housing MDX-D810,D7100,D500,D850,Z7,Z7II
- ③ C2 Compatible Housing MDX-5DmarkIV,5DmarkIII ver.2
- ④ CR Compatible Housing MDX-R5

Viewfinder VF180 1.2x

[46112](#)



Straight-type viewfinder compatible with both RDX and MDX housings. The magnification of the viewfinder is magnified by 1.2x, which is effective for checking focus and composition. The lens consists of 8 elements in 6 groups of optical glass for excellent color reproduction, and the interior is filled with nitrogen gas to prevent condensation.

*Tools necessary for installation are included.
*Some vignetting may occur depending on the model used.

Viewfinder VF45 1.2x

[46111](#)



45° viewfinder compatible with MDX housing using an amici prism. Magnification of 1.2x allows for precise composition and focusing. The eyepiece rotates 360° in 90° steps to accommodate a variety of shooting positions, both horizontally and vertically.

*Tools necessary for installation are included.
*Not compatible with RDX series housings.
*Slight vignetting may occur depending on the model used.

Drying Agent OZO

[62168](#)



Four times the moisture absorbing power of silica gel. Packaged in aluminum packs of 5.

[Size] 60×10mm
[Content by Volume] 0.55g

0.5x interchangeable Pick-up Finder

[46108](#)



Reduces vignetting in the viewfinder image. Recommended mainly for wide-angle photography and other situations where checking the entire composition is important.

*Depending on the camera used, vignetting may occur in the four corners of the viewfinder.

0.8x interchangeable Pick-up Finder

[46104](#)

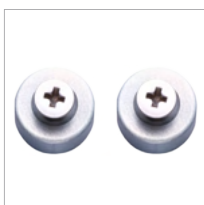


Recommended for those who are nearsighted or who want to make sure that the center of the lens is in focus for macro photography, etc.

*Vignetting occurs in the four corners of the viewfinder.

Replacement Zinc Pieces

[46116](#)



Corrosion inhibitor for housing. Pack of 2.

Silicone Grease

[01900](#)



This item is indispensable for O-ring maintenance.

[Main Component] Silicon
[Content by Volume] 4.5g

O-ring Remover

[01920](#)



Tool for removing O-rings without scratching them when cleaning or greasing them.

Housing Lanyard IV

46137



This new type of lanyard is convenient for carrying a housing. It can be attached to all RDX and MDX housings via Grip-Stay II.

[Effective Length] 320mm

Grip Extensions

22143 GUNMETAL 22144 YELLOW



Extension to increase the distance between the grip and housing body by 8mm. Suitable for people with large hands. 2 pcs. with special mounting screws.

Ergo-Grip ver.2

22137



Replacement grip for housing. It features a grip that fits comfortably in both hands.

[Size] W77×H146×D53mm
 [Weight] 192g (per Grip)
 [Depth of Pressure] 100m
 [Material] Corrosion-resistant die-cast aluminum

Float Arm Handle

46124 BLACK 46132 PINK

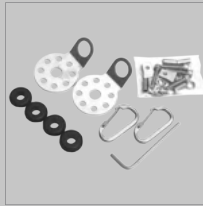


Multi-purpose float for buoyancy adjustment that can be used as a handle/arm.

[Material] Polyethylene
 [Depth of Pressure] 50m
 [Operating Temp.] 1~40°C
 [Size] W256×H76×D62mm
 [Buoyancy] 280g

Float Arm Handle Mounting Bracket set

46130



A set of mounting hardware to use the float arm handle as a handle.

[Material] Stainless steel, Synthetic rubber
 [Weight] 96g (2sets)
 [Accessories] Hexagonal wrench, Instruction manual

SA8 Fixed Ball Base Mounting Bracket Set

46133



Fittings for attaching the SA8 fixed ball base to the float arm handle.

[Material] Stainless steel
 [Weight] 25g
 [Accessories] Hexagonal wrench, Instruction manual

ML Hand Strap

46118



For improved hold of compact camera housings.

[Material] Neoprene

Grip Plus

22142 YELLOW 22145 GRAY



Attachment that attaches to the grip of the housing for a firm grip. Simply push it into the concave portion of the grip for easy attachment.

Strobe Connector/N

50147



Extension connector for attaching a strobe connector to the housing.

M16 Connector

46134



By attaching to the expansion connector of the housing, M16-compatible accessories such as external monitors from other manufacturers can be used.

DX Housing Body Cap

51280



ML Housing Body Cap

46120



DX DOME PORT 210AR

30152

ACRYLIC COATING

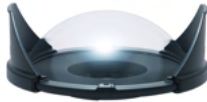


[Size] 250×104mm
 [Weight] 1,310g
 [Depth of Pressure] 80m
 [Material] Body: Corrosion-resistant aluminum alloy (Anodized aluminum alloy, Anti-reflective coating on inside)
 Dome: Special optical resin (anti-reflection coating on inner surface)
 Hood: ABS resin

DX DOME PORT 210

30151

ACRYLIC



[Size] 250×104mm
 [Weight] 1,310g
 [Depth of Pressure] 80m
 [Material] Body: Corrosion-resistant aluminum alloy (Anodized aluminum alloy, Anti-reflective coating on inside)
 Dome: Special optical resin (anti-reflection coating on inner surface)
 Hood: ABS resin

DX DOME PORT 150

30150

ACRYLIC



[Size] 174×79.5mm
 [Weight] 410g
 [Depth of Pressure] 60m
 [Material] Body: Corrosion-resistant aluminum alloy (Anodized aluminum alloy, Anti-reflective coating on inside)
 Dome: Special optical resin (anti-reflection coating on inner surface)
 Hood: ABS resin

DX Glass Dome Port 200AR

30142

GLASS COATING

New



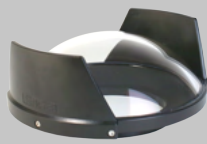
[Size] 220×99mm
 [Weight] 1,620g
 [Depth of Pressure] 100m
 [Material] Body: Corrosion-resistant aluminum alloy
 Dome: Optical glass
 Hood: ABS resin

DX Glass Dome Port 170

30141

GLASS COATING

New



[Size] 181×78mm
 [Weight] 820g
 [Depth of Pressure] 60m
 [Material] Body: Corrosion-resistant aluminum alloy
 Dome: Optical glass
 Hood: ABS resin

Please refer to our WEB site for port system chart.

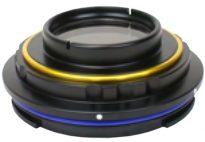


DX Macro Port 15II

30146

GLASS COATING

New



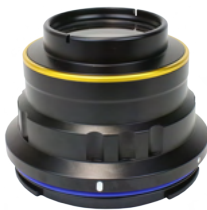
[Size] 128×48mm
 [Weight] 340g
 [Depth of Pressure] 100m
 [Material] Corrosion-resistant aluminum alloy (Anodized aluminum alloy)
 Toughened glass (multi-coated)

DX Macro Port 60II

30147

GLASS COATING

New



[Size] 128×93mm
 [Weight] 470g
 [Depth of Pressure] 100m
 [Material] Corrosion-resistant aluminum alloy (Anodized aluminum alloy)
 Toughened glass (multi-coated)

DX Macro Port 90II

30148

GLASS COATING

New

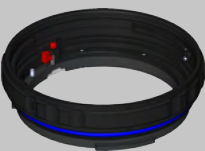


[Size] 128×123mm
 [Weight] 550g
 [Depth of Pressure] 100m
 [Material] Corrosion-resistant aluminum alloy (Anodized aluminum alloy)
 Toughened glass (multi-coated)

DX Extension Ring 20L

30143

New



[Size] 132×35mm
 [Weight] 170g
 [Depth of Pressure] 100m
 [Material] Corrosion-resistant aluminum alloy (Anodized aluminum alloy)

DX Extension Ring 30L

30144

New

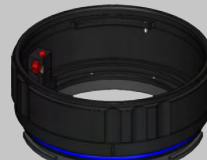


[Size] 132×45mm
 [Weight] 220g
 [Depth of Pressure] 100m
 [Material] Corrosion-resistant aluminum alloy (Anodized aluminum alloy)

DX Extension Ring 40L

30145

New



[Size] 132×55mm
 [Weight] 280g
 [Depth of Pressure] 100m
 [Material] Corrosion-resistant aluminum alloy (Anodized aluminum alloy)

Dome Port Cover L

46139



DX Dome Port 210AR/DX Dome Port 210

Dome Port Cover M

46138



DX Glass Dome Port 200AR

Dome Port Cover S

46140



DX Glass Dome Port 170AR/DX Dome Port 150

ML Port Rear Cover

46121



DX Port Rear Cover

51260



AMBASSADOR'S GALLERY



Photo by Mike Bartick saltwaterphoto.com





MADE IN JAPAN



DX-6G

for RICOHWG-80 / 70 / 60 / 50

06666 Camera and Housing Set

06197 Housing only

Equipped with underwater-only Mermaid mode

Mermaid mode is available to suppress blue blur when shooting underwater. Mermaid movie mode can be used when shooting movies.



Program mode

Mermaid mode

SS bayonet Wide Conversion Lens/WCL06

52152



This allows the user to capture a wider area for more powerful images. A bayonet mount is used.

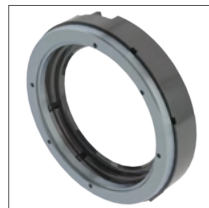
[Size] 97mm×50.5mm
[Weight] 400g
[Focal length magnification] 0.6x
[Underwater view angle] max. 94°
[Depth of Pressure] 60m



Without WCL06

M52 Mount Adapter for DX-6G

52153



Allows the attachment of M52 mount conversion lenses.

[Size] 121.3mm
[Weight] 50.5g
[Material] Corrosion-resistant aluminum alloy



With WCL06

Body Size

W165×H93×D61mm

Weight

about 605g

Depth of Pressure

55m

Material Properties

Body: Polycarbonate resin
Grip: ABS resin

SA8 Double Ball Arm S

22112



Precision arm with both light weight and high rigidity machined from aluminum alloy.

[Length] 143mm
[Weight] 60g
[Material] Corrosion-resistant aluminum alloy

SA8 Double Ball Arm M

22113

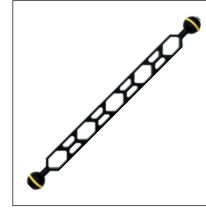


Precision arm with both light weight and high rigidity machined from aluminum alloy.

[Length] 223mm
[Weight] 80g
[Material] Corrosion-resistant aluminum alloy

SA8 Double Ball Arm L

22114



Precision arm with both light weight and high rigidity machined from aluminum alloy.

[Length] 323mm
[Weight] 110g
[Material] Corrosion-resistant aluminum alloy

SA8 Ball Clamp II

22138



The ball clamp can be used in two ways by rearranging the parts.

[Size] W66×H71×D26mm
[Weight] 97g
[Material] Corrosion-resistant aluminum alloy

SA8 Strobe Head S

22115



As a joint between the end of an arm and a YS series strobe.

[Length] 68.5mm
[Weight] 41g
[Material] Corrosion-resistant aluminum alloy

SA8 Strobe Head M

22126



As a joint between the end of an arm and a YS series strobe.

[Length] 121.3mm
[Weight] 50.5g
[Material] Corrosion-resistant aluminum alloy

SA8 Fixed Ball Base

22119



Can be attached directly to extra grips, etc.

[Height] 47mm
[Weight] 37g
[Material] Corrosion-resistant aluminum alloy

SA8 Ball Base for Accessory Shoell SA8 Double Strobe Head

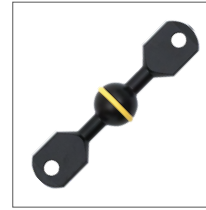
22139



Large lock nut is used. Hook plate to prevent disconnection.

[Height] 67mm
[Weight] 55g
[Material] Corrosion-resistant aluminum alloy

22129



Lighting can be branched to the left or right at the end of the armwork.

[Length] 120mm
[Weight] 70g
[Material] Corrosion-resistant aluminum alloy

SA8 Double Ball Strobe Head

22127



Two-light lighting in the form of branching branches is possible.

[Length] 121.3mm
[Weight] 70g
[Material] Corrosion-resistant aluminum alloy

SA8 Camera Tray + Grip

22118



Multi-type grip set with camera tray for easy holding.

[Size] W217×H130×D77mm
[Weight] 275g
[Material] Corrosion-resistant aluminum alloy

SA8 Extra Grip

22122



Grip for additional use. Unique triangle design for a form that fits comfortably in the hand.

[Size] W52×H120×D15mm
[Weight] 111g
[Material] Corrosion-resistant aluminum alloy

SA8 Camera Tray Extension

22121



An intermediate plate connecting the camera tray and camera tray adapter.

[Size] W35×H35×D15mm
[Weight] 38g
[Material] Corrosion-resistant aluminum alloy

SA8 Camera Tray Adapter

22123

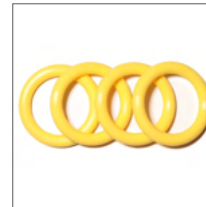


Adapter to connect the camera tray to the extra grip.

[Size] W100×H5×D35mm
[Weight] 42g
[Material] Corrosion-resistant aluminum alloy

SA8 Spare O-ring (Yellow)

62170



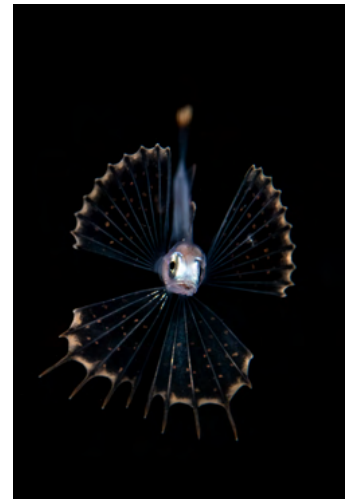
Replacement O-ring set for SA8 series. 4 pieces.

AMBASSADOR'S GALLERY



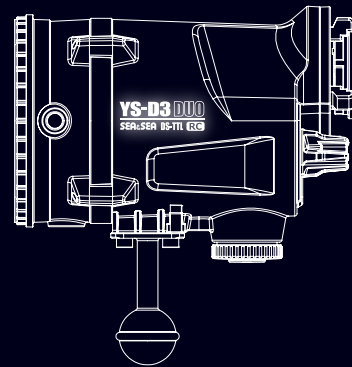
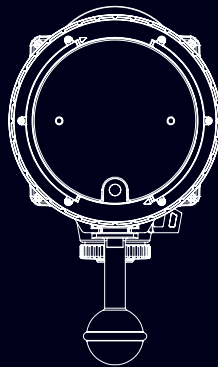
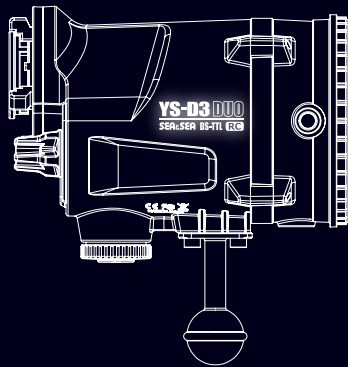
Photo by Mike Bartick

saltwaterphoto.com



YS-D3 DUO

SEA&SEA DS-TTL RC



Fisheye

Fisheye Co., Ltd.

5-29-7, Minaminagasaki, Toshima-ku, Tokyo, 171-0052, Japan
TEL +81-3-5996-5637 / FAX +81-3-5996-7202

SEA&SEA

THE UNDERWATER IMAGING COMPANY
Sea&Sea Co., Ltd.

Daini-Sueno Bld. 2F, 4-8-11, Nagasaki, Toshima-ku, Tokyo, 171-0051, Japan
TEL +81-3-5926-9320 / FAX +81-3-5926-9321

*The specifications of the products in this catalog are subject to change for improvement without notice.
*Product photographs in this catalog may differ slightly from the actual product. *The information in this catalog is current as of March 2023. *Company names and product names in this catalog are trademarks or registered trademarks. *No part of the photographs, illustrations or text in this catalog may be used without permission.

Please refer to
our WEB site
for port system chart.



Safety Precautions



Please read the instruction manual before use to ensure correct and safe use.

*Do not use power supplies, voltages, connection cords, or AC adapters other than those specified. Doing so may cause fire or electric shock. *Do not use the product in a malfunctioning state, such as when the screen does not display. Doing so may cause fire or electric shock. *Do not use the product under abnormal conditions such as water or foreign objects getting inside, smoke coming out, or strange smells. Doing so may cause fire or electric shock.

www.seaandsea.co.jp

2023.03